

# wallner & neubert

Water Technology for Living Environments



Recessed Covers

**ALUPURA<sup>®</sup>**

**PURANOX<sup>®</sup> PURASTEEL<sup>®</sup>**



**purator<sup>™</sup>**

## Recessed covers

**ALUPURA®** made of aluminium

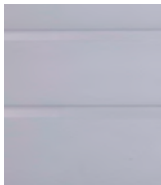
**PURANOX®** made of stainless steel

**PURASTEEL®** made of galvanised steel



The variable surface of our recessed covers makes manholes, inspection chambers and access fittings less noticeable and maintains the visual aesthetic of the paving or the flooring. Recessed covers suit for internal as well as external installation.

### Material



**ALUPURA®**-covers are manufactured from aluminium alloy AlMgSi05, which provides good chemical resistance. No risk of rusting, no attending painting-problems, even when damaged! At extremely high salt or chlorine levels we recommend the use of stainless-steel covers

(min. Material Ref. 1.4301).

**PURANOX®** (stainless steel) and **PURASTEEL®** (galvanised steel) complement the product range.



### ALUPURA® corner parts



The corner parts of aluminium die-cast increase the stability of the construction. The square shape facilitates the laying of tiles.

### Easy opening and secure lock



The provided keys are suitable to screw the cover as well as to lift the cover out. Keys, protection caps, screws and sealing can be delivered subsequently.

### Dust strip



The dust strip avoids soiling between frame and cover by paving over. Further the strip facilitates the opening of the installed cover by keeping the cover's seating clean and guards the profile edges from mechanical damage.

Loading resilience

ALUPURA®-covers are tested with standard concrete-filling according to EN 206 type C 30/37. By filling the tray completely breaking loads of 70 up to 90 kN can be achieved.

Therefore recessed covers can be used in all pedestrian areas.

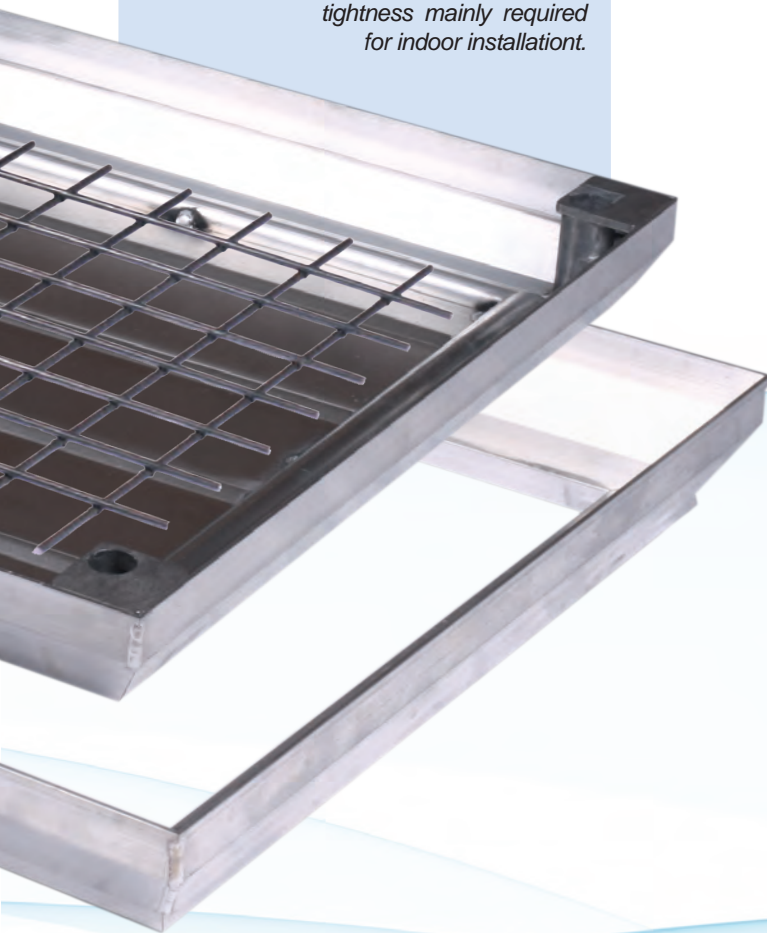
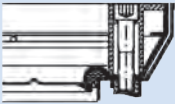


By using concrete of higher quality (min. type C 30/37 according to EN 206) and the installation of a second steel mesh for reinforcement a loading of class B 125 (car parking areas) according to EN 124 can be realised.



Water and odour proof

The unique ALUPURA® all-around sealing, pressed against the inner edge of the frame, and 4-screw joint, positioned outside the sealing line, ensure water and odour tightness mainly required for indoor installation.

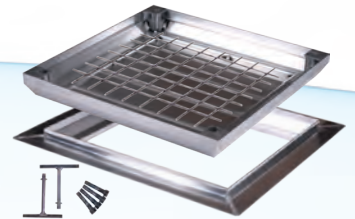


PURASTEEL® and PURANOX® are capable for class B 125 areas by complete filling of the tray with standard concrete type C 30/37.

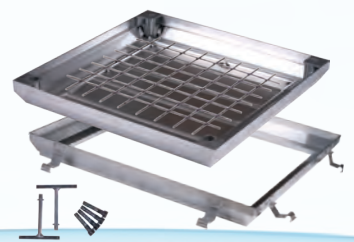
The installation of certain flooring can reduce loading capacity.

Variations

ALUPURA® with flanged frame: for secure joint of floor sealing to frame.



ALUPURA® backflow proof: the tightly welded tray and 8 ground anchors provide the backflow proof of the access up to 0,5 bar (tested and certified by independent authorities).

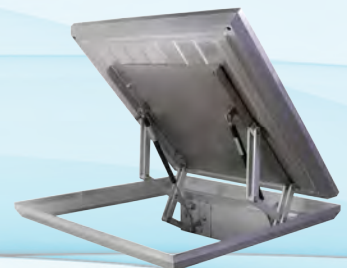


Continuous or multiple cover

ALUPURA® can be customized to any requirements. Nonstandard sizes, removable support beams, non recessed cover variations can be manufactured.



ALUPURA® HH: recessed cover with spring-assist system for easy opening. The unique pantograph-hinge and the gas-filled spring ensure easy and horizontal lifting of the cover, which avoids mechanical damage of edges and cares for the easy handling.





## ALUPURA®

the original  
often copied, never achieved



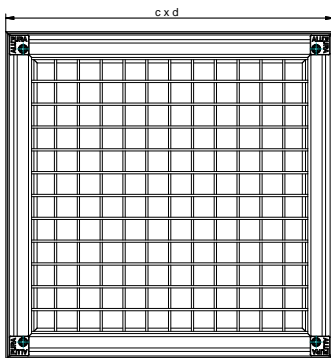
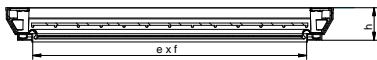
### Product features

- Material: aluminium alloy
- Consisting of frame and recessed cover with inserted steel-mesh
- Water and odour proof by all-around sealing pressed against the inner edge of the frame and 4-screw joint positioned outside the sealing line
- Square-shaped corner-parts for easy laying of tiles
- Easy opening by special keys and dust strip
- Dust strip avoids soiling between frame and cover by paving over and guards the profile edges from mechanical damage
- Tray depth 58 mm

### Field of application

For versatile internal and external usage suitable for pedestrian and cycle traffic.

By using concrete of higher quality (complete filling of the tray) and the installation of a second steel mesh for reinforcement a loading of class B 125 according to EN 124 can be realised.



### Product details

Art. No.	Dimensions mm			Weight kg
	e x f	c x d	h	
1065BV-ALU30-30	300x300	420x420	75	4,6
1065BV-ALU40-40	400x400	520x520	75	5,8
1065BV-ALU45-45	450x450	570x570	75	6,5
1065BV-ALU50-50	500x500	620x620	75	7,1
1065BV-ALU60-40	600x400	720x520	75	7,1
1065BV-ALU60-60	600x600	720x720	75	9
1065BV-ALU70-70	700x700	820x820	75	10,6
1065BV-ALU80-60	800x600	920x720	75	10,5
1065BV-ALU80-80	800x800	920x920	75	12,5
1065BV-ALU10-60	1000x600	1120x720	75	12,5
1065BV-ALU10-80	1000x800	1120x920	75	13
1065BV-ALU10-10	1000x1000	1120x1120	75	14,5

• Please ask for further dimensions

#### Tender specifications

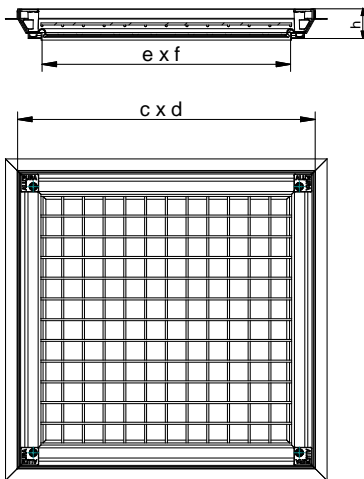
ALUPURA® recessed cover for variable surface, loading class A15/ B125 according to EN124, concrete filling on site according to the manufacturer's instructions. Cover consisting of frame (frame height 75 mm) and tray cover (tray depth 58 mm) of aluminium alloy with steel mesh and dust strip; Water and odour proof by all-around sealing pressed against the inner edge of the frame and 4-screw joint positioned outside the sealing line; with square-shaped corner-parts for easy laying of tiles.

Dimensions and weight see table.



## ALUPURA® with flanged frame

for secure joint  
of floor sealing to frame



### Product features

- Material: aluminium alloy
- Consisting of frame and recessed cover with inserted steel-mesh
- With flanged frame (30 or 80 mm wide) for the secure joint of the floor sealing
- Water and odour proof by all-around sealing pressed against the inner edge of the frame and 4-screw joint positioned outside the sealing line
- Square-shaped corner-parts for easy laying of tiles
- Easy opening by special keys and dust strip
- Dust strip avoids soiling between frame and cover by paving over and guards the profile edges from mechanical damage
- Tray depth 58 mm

### Field of application

For versatile internal and external usage suitable for pedestrian and cycle traffic.

By using concrete of higher quality (complete filling of the tray) and the installation of a second steel mesh for reinforcement a loading of class B 125 according to EN 124 can be realised.

### Product details

Art. No.	Dimensions mm			Flange width mmm	Weight kg
	e x f	c x d	h		
1065BV-ALU-F144	400x400	580x580	75	30	7
1065BV-ALU-F166	600x600	780x780	75	30	10,2
1065BV-ALU-F188	800x800	980x980	75	30	14,3
1065BV-ALU-F233	300x300	580x580	75	80	5
1065BV-ALU-F244	400x400	680x680	75	80	7,8
1065BV-ALU-F264	600x400	880x680	75	80	8,5
1065BV-ALU-F266	600x600	880x880	75	80	11,2
1065BV-ALU-F279	700x900	980x1180	75	80	14
1065BV-ALU-F288	800x800	1080x1080	75	80	14

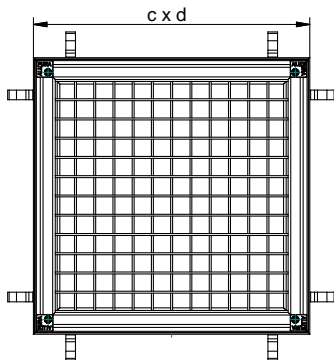
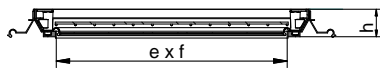
• The flange is situated 22 mm under the top edge of the floor  
• Please ask for further dimensions

#### Tender specifications

ALUPURA® recessed cover for variable surface, loading class A15/ B125 according to EN124, concrete filling on site according to the manufacturer's instructions. Cover consisting of flanged frame (frame height 75 mm, flange width 30/ 80 mm) and tray cover (tray depth 58 mm) of aluminium alloy with steel mesh and dust strip; Water and odour proof by all-around sealing pressed against the inner edge of the frame and 4-screw joint positioned outside the sealing line; with square-shaped corner-parts for easy laying of tiles. Dimensions and weight see table.



## ALUPURA® backflow proof up to 0,5 bar



### Product features

- Material: aluminium alloy
- Consisting of frame and recessed cover with inserted steel-mesh
- With tightly welded tray and 8 ground anchors providing the backflow proof up to 0,5 bar
- Water and odour proof by all-around sealing pressed against the inner edge of the frame and 4-screw joint positioned outside the sealing line
- Square-shaped corner-parts for easy laying of tiles
- Easy opening by special keys and dust stripl
- Dust strip avoids soiling between frame and cover by paving over and guards the profile edges from mechanical damage
- Tray depth 58 mm

### Field of application

For versatile internal and external usage suitable for pedestrian and cycle traffic.

By using concrete of higher quality (complete filling of the tray) and the installation of a second steel mesh for reinforcement a loading of class B 125 according to EN 124 can be realised.

### Product details

Art. No.	Dimensions mm			Weight kg
	e x f	c x d	h	
1065BV-ALU-RS33	300x300	420x420	75	9
1065BV-ALU-RS44	400x400	520x520	75	6,5
1065BV-ALU-RS45	450x450	570x570	75	7,2
1065BV-ALU-RS55	500x500	620x620	75	7,5
1065BV-ALU-RS64	600x400	720x520	75	7,5
1065BV-ALU-RS66	600x600	720x720	75	9,5

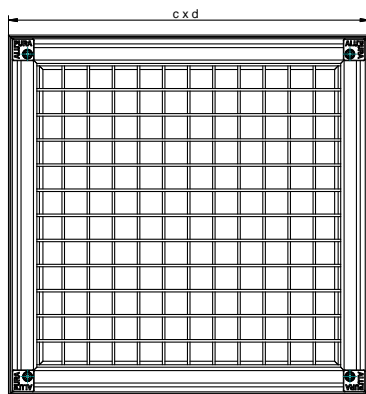
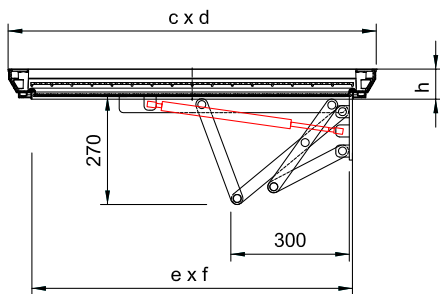
- backflow proof up to 0,5 bar

#### Tender specifications

ALUPURA® recessed cover for variable surface, loading class A15/ B125 according to EN124, backflow proof up to 0,5 bar, concrete filling on site according to the manufacturer's instructions. Cover consisting of frame (frame height 75 mm) with 8 ground anchors and tightly-welded tray-cover (tray depth 58 mm) of aluminium alloy with steel mesh and dust strip; Water and odour proof by all-around sealing pressed against the inner edge of the frame and 4-screw joint positioned outside the sealing line; with square-shaped corner-parts for easy laying of tiles. Dimensions and weight see table.



**ALUPURA® HH**  
with spring-assist system  
for easy opening



## Product features

- Material: aluminium alloy
- Consisting of frame and recessed cover with inserted steel-mesh and opening device
- The unique pantograph-hinge cares for a horizontal lifting of the cover, which avoids mechanical damage of edges
- 2 gas-filled springs, made of stainless steel, ensure easy opening
- Carrier plate (mounted at bottom side of cover) and support plate (to be mounted inside the manhole on site) are made of galvanised steel
- Water and odour proof by all-around sealing pressed against the inner edge of the frame and 4-screw joint positioned outside the sealing line
- Square-shaped corner-parts for easy laying of tiles
- Easy opening by special keys and dust strip
- Dust strip avoids soiling between frame and cover by paving over and guards the profile edges from mechanical damage
- Tray depth 58 mm

## Field of application

For all applications, where often and easy opening of covers are required. For versatile internal and external usage suitable for pedestrian and cycle traffic.

By using concrete of higher quality (complete filling of the tray) and the installation of a second steel mesh for reinforcement a loading of class B 125 according to EN 124 can be realised.

## Product details

Art. No.	Dimensions mm			Weight kg
	e x f	c x d	h	
1065BV-ALU66HH	600x600	718x718	75	28
1065BV-ALU86HH	600x800	718x918	75	29,5
1065BV-ALU77HH	700x700	818x818	75	29,5
1065BV-ALU88HH	800x800	918x918	75	31,5
1065BV-ALU106HH	1000x600	1118x718	75	31,5
1065BV-ALU108HH	1000x800	1118x918	75	32
1065BV-ALU110HH	1000x1000	1118x1118	75	33,5

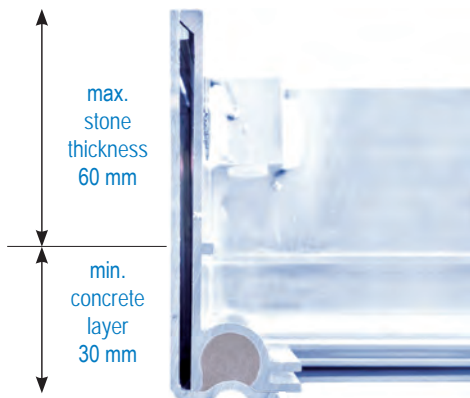
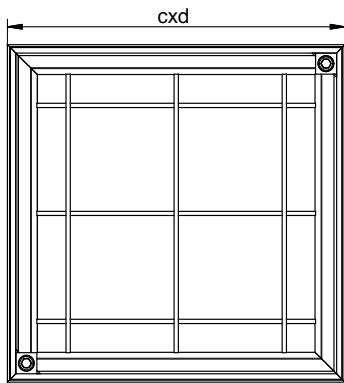
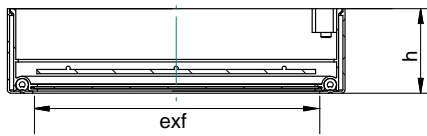
### Tender specifications

ALUPURA® HH recessed cover for variable surface, with opening device, loading class A15/ B125 according to EN124, concrete filling on site according to the manufacturer's instructions. Cover consisting of frame (frame height 75 mm) and tray cover (tray depth 58 mm) of aluminium alloy with steel mesh and dust strip; Opening device consists of 2 pantograph hinges, which ensure a horizontal lifting of the cover out of the frame, and 2 gas-filled springs for easy lifting. Water and odour proof by all-around sealing pressed against the inner edge of the frame and 4-screw joint positioned outside the sealing line; with square-shaped corner-parts for easy laying of tiles. Dimensions and weight see table.





## ALUSTONE® with deep tray for block or brick paving



### Product features

- Material: aluminium alloy
- Consisting of frame and recessed cover with inserted steel-mesh
- Deep tray depth of 90 mm for block or brick paving up to 60 mm
- Water and odour proof by all-around sealing and 2-screw joint
- Easy opening by provided keys

### Field of application

For all applications, where paving of stones or bricks up to a thickness of 60 mm is required.

For versatile internal and external usage suitable for pedestrian and cycle traffic.

By using concrete of higher quality (complete filling of the tray) and the installation of a second steel mesh for reinforcement a loading of class B 125 according to EN 124 can be realised.

### Product details

Art. No.	Dimensions mm			Weight kg
	e x f	c x d	h	
1065B-AP10-30	240 x 240	300 x 300	100	3,1
1065B-AP10-40	340 x 340	400 x 400	100	4,4
1065B-AP10-50	440 x 440	500 x 500	100	5,9
1065B-AP10-60	540 x 540	600 x 600	100	7,5
1065B-AP10-70	640 x 640	700 x 700	100	9,4
1065B-AP10-80	740 x 740	800 x 800	100	11,1
1065B-AP10-90	840 x 840	900 x 900	100	13,5
1065B-AP10-100	940 x 940	1000 x 1000	100	15,3

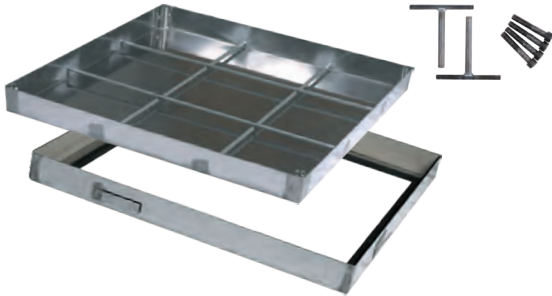
#### Tender specifications

ALUSTONE® recessed cover for variable surface, loading class A15/ B125 according to EN124, concrete filling on site according to the manufacturer's instructions. Cover consisting of frame (frame height 100 mm) and cover with deep tray depth of 90 mm of aluminium alloy with steel mesh; Water and odour proof by all-around and 2-screw joint. Dimensions and weight see table.





**PURANOX®**  
cover for variable surface  
made of stainless steel



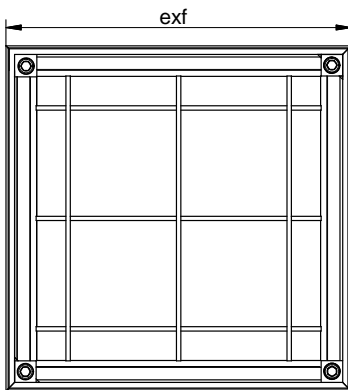
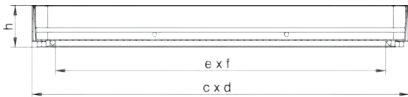
### Product features

- Material: stainless steel (Material Ref. 1.4301)
- Consisting of frame and recessed cover with inserted steel-mesh
- Frame with fixing anchors
- Water and odour proof by all-around sealing and 4-screw joint positioned outside the sealing line
- Easy opening by provided keys
- Tray depth 52

### Field of application

For versatile internal and external usage suitable for pedestrian and cycle traffic.

By using concrete of higher quality (complete filling of the tray) and the installation of a second steel mesh for reinforcement a loading of class B 125 according to EN 124 can be realised.



### Product details

Art. No.	Dimensions mm			Weight kg
	e x f	c x d	h	
1065BVE33K	300x300	420x420	75	9
1065BVE44K	400x400	520x520	75	13
1065BVE55K	500x500	620x620	75	17
1065BVE64K	600x400	720x520	75	16
1065BVE66K	600x600	720x720	75	20
1065BVE88K	800x800	920x920	75	30

#### Tender specifications

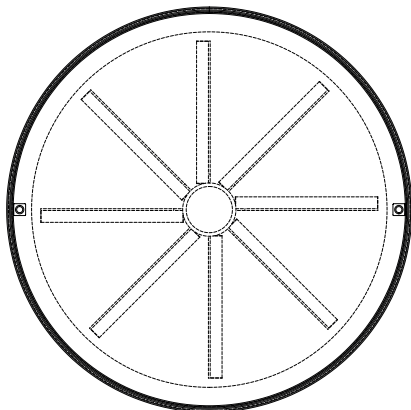
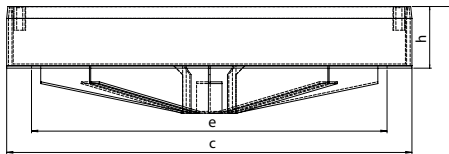
PURANOX® recessed cover for variable surface, loading class A15/ B125 according to EN124, concrete filling on site according to the manufacturer's instructions. Cover consisting of frame (frame height 75 mm) and tray (depth 52 mm), both of stainless steel, Mat.Ref. 1.4301, with steel mesh; Water and odour proof by all-around sealing and 4-screw joint positioned outside the sealing line.

Dimensions and weight see table.



## PURANOX® round design

cover for variable surface  
made of stainless steel with deep tray



### Product features

- Material: stainless steel (Material Ref. 1.4301)
- Consisting of frame and recessed cover with reinforced ground plate
- Cover with 2 opening and fixing sleeves
- Easy opening by provided keys
- Tray depth 95 mm

### Field of application

For versatile internal and external usage suitable for pedestrian and car traffic.

The welded reinforcement of the ground plate ensures a loading of up to 5 tons, even when not filled with concrete. When suitable filled much higher loads can be achieved.

### Product details

Art. No.	Dimensions mm			Weight kg
	e	c	h	
1065BHE-MAXI600	Ø 600	Ø 684	104	25

### Accessories

- Fixing anchors welded to the frame
- Steel mash

#### Tender specifications

PURANOX® round-shaped recessed-cover for variable surface, loading class A15/ B125 according to EN124, concrete filling on site according to the manufacturer's instructions. Cover consisting of frame (frame height 104 mm) and tray (depth 95 mm) of stainless steel; reinforced ground plate of cover tray; cover with 2 opening and fixing sleeves. Dimensions and weight see table.

Optional: fixing anchors welded to the frame; steel mash



**PURASTEEL®**  
cover for variable surface  
made of galvanised steel

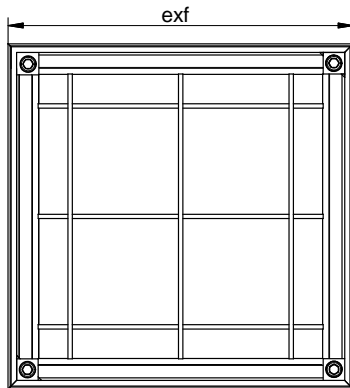
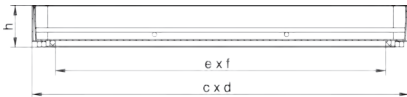


- Material: hot-galvanised steel
- Consisting of frame and recessed cover with inserted steel-mesh
- Frame with fixing anchors
- Water and odour proof by all-around sealing and 4-screw joint positioned outside the sealing line
- Easy opening by provided keys
- Tray depth 52 mm or 100 mm

### Field of application

For versatile internal and external usage suitable for pedestrian and cycle traffic.

By using concrete of higher quality (complete filling of the tray) and the installation of a second steel mesh for reinforcement a loading of class B 125 according to EN 124 can be realised.



### Product details

Art. No.	Dimensions mm			Weight kg
	e x f	c x d	h	
<b>Tray depth 52mm</b>				
1065BV125-33K	300x300	420x420	75	10
1065BV125-45K	450x450	570x570	75	16
1065BV125-55K	500x500	620x620	75	17
1065BV125-64K	600x400	720x520	75	17
1065BV125-66K	600x600	720x720	75	21
1065BV125-86K	800x600	920x720	75	27
1065BV125-88K	800x800	920x920	75	31
1065BV125-106K	1000x600	1120x720	75	31
1065BV125-108K	1000x800	1120x920	75	37
1065BV125-110K	1000x1000	1120x1120	75	42
<b>Tray depth 100mm</b>				
1065BVH-MAXI66K	600x600	706x706	113	28
1065BVH-MAXI88	800x800	952x952	125	40

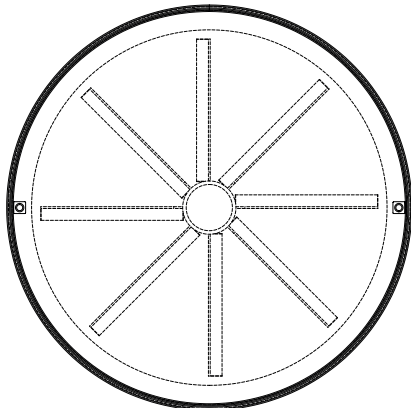
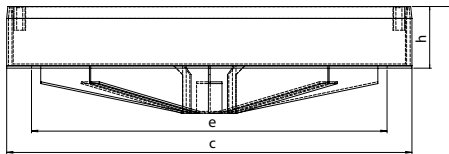
#### Tender specifications

PURASTEEL® recessed cover for variable surface, loading class A15/ B125 according to EN124, concrete filling on site according to the manufacturer's instructions. Cover consisting of frame (frame height 75 mm) and tray (depth 52 mm), both of hot-galvanised steel, with steel mesh; Water and odour proof by all-around sealing and 4-screw joint positioned outside the sealing line. Dimensions and weight see table. Optional: tray depth 100 mm



## PURASTEEL® round design

cover for variable surface  
made of galvanised steel with deep tray



### Product features

- Material: hot-galvanised steel, round shaped
- Consisting of frame and recessed cover with reinforced ground plate
- Cover with 2 opening and fixing sleeves
- Easy opening by provided keys
- Tray depth 95 mm

### Field of application

For versatile internal and external usage suitable for pedestrian and car traffic.

The welded reinforcement of the ground plate ensures a loading of up to 5 tons, even when not filled with concrete. When suitable filled much higher loads can be achieved.

### Product details

Art. No.	Dimensions mm			Weight kg
	e	c	h	
1065BH-MAXI600	Ø 600	Ø 684	104	27

### Accessories

- Fixing anchors welded to the frame
- Steel mash

#### Tender specifications

PURASTEEL® round-shaped recessed-cover for variable surface, loading class A15/ B125 according to EN124, concrete filling on site according to the manufacturer's instructions. Cover consisting of frame (frame height 104 mm) and tray (depth 95 mm) of hot-galvanised steel; reinforced ground plate of cover tray; cover with 2 opening and fixing sleeves. Dimensions and weight see table.

Optional: fixing anchors welded to the frame; steel mash.



## Duct and multiple covers

customized variations  
of recessed covers



*ALUPURA duct covers made of aluminium*



*Duct covers with non-recessed plates, hinges  
and fixed support beams*

## Product features

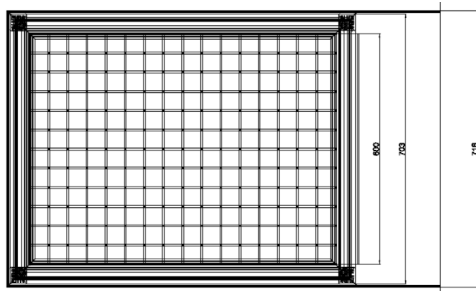
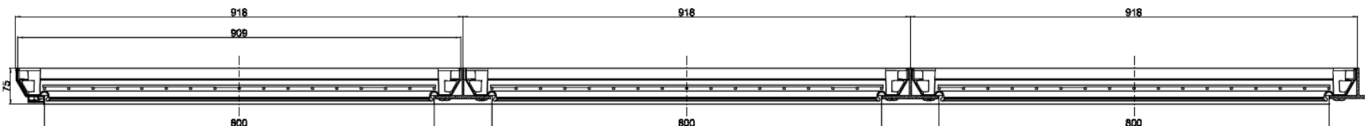
- Based on our construction concept a huge amount of variations made of aluminium, stainless steel or galvanised steel can be optionally produced.
- Duct covers: with optionally uninterrupted access along complete duct length; duct covers are available in clear openings up to 1000 mm.
- Multiple covers: optionally removable support beams incorporating frame centre bearers provide uninterrupted access to chamber. Clear opening marginally reduced by projecting beam chair.
- Watertight and backflow- proof variations available.
- Non-recessed covers with/ without bulb plate upon request.
- Particular elements can be produced with hinges or opening supports.
- Frames with a length of up to 3400 mm are produced in one part. Larger frames can be delivered as split frames with flange joint.

## Field of application

For versatile internal and external usage suitable for pedestrian and car traffic.

### Tender specifications

Upon request



*ALUPURA duct covers  
with removable, flanged support beams*



## Recessed cover made of ductile iron

heavy-duty recessed-cover  
for public traffic areas

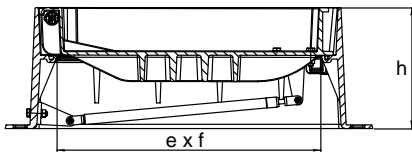


### Product features

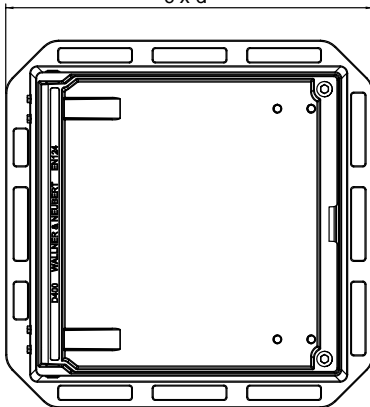
- Material: ductile iron
- Produced and tested according to EN 124, load class D 400
- Consisting of frame and recessed cover with opening support
- Patented hinges with removable bolts
- Hinge bolts are free of load when cover is closed
- 2 gas-filled springs of stainless steel for opening support
- Cover can be fixed by 2 bolts when closed
- Tray depth 100 mm
- Suitable for stone paving up to 80 mm height

### Field of application

For urban traffic in traffic-calmed areas for all applications where the maintenance of the visual aesthetic of the paving or the flooring is demanded (e.g. covers of manholes or inspection chambers in pedestrian or market areas).



c x d



### Product details

Art. No.	Dimensions mm			Klasse	Weight kg
	e x f	c x d	h		
92400PAT66GD-H	□ 600	□ 836	275	D400	160

#### Tender specifications

Recessed cover for variable surface with opening support produced and tested according to EN 124, loading class D400. Cover and frame made of ductile iron, tray depth 100 mm, with patented hinges with removable bolts, hinge bolts are free of load when cover is closed. Opening support with 2 gas-filled springs made of stainless steel. Double fixation by bolts when cover is closed. Suitable for stone paving, stone thickness up to 80 mm  
Dimensions and weight see table.



## Recessed cover made of ductile iron

heavy-duty recessed-cover  
for public traffic areas, round shaped

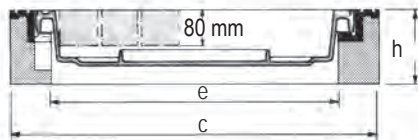


### Product features

- Material: ductile iron
- Produced and tested according to EN 124, load class D 400
- recessed cover suitable for all frames according to ON/EN 124 with 50 mm insertion depth
- suitable for the replacement of existing covers according to ON/EN 124 with 50 mm insertion depth
- Tray depth 100 mm
- Suitable for stone paving up to 80 mm height

### Field of application

For urban traffic in traffic-calmed areas for all applications where the maintenance of the visual aesthetic of the paving or the flooring is demanded (e.g. covers of manholes or inspection chambers in pedestrian or market areas).



### Product details

Art. No.	Dimensions mm			Klasse	Weight kg
	e	c	h		
Recessed cover ductile iron					
DE90400	Ø 610	Ø 654	-	D400	65
Suitable frame cast-iron round-shaped					
RA01000-50	Ø 610	Ø 750	100	D400	39
Suitable frame concrete and iron round-shaped					
RA07000-50	Ø 610	Ø 785	160	D400	85

#### Tender specifications

Recessed cover for variable surface produced and tested according to EN 124, loading class D400. Cover made of ductile iron, tray depth 100 mm, suitable for all frames according to ON/EN 124 with 50 mm insertion depth. Suitable for stone paving, stone thickness up to 80 mm. Dimensions and weight see table.

**Wallner & Neubert  
Gesellschaft m.b.H.**

office@pwn.at  
www.pwn.at

05 05 13-0  
Austria-wide by local rate

**MÖDLING -  
Headquarters**

Im Felberbrunn 2  
2340 Mödling

moedling@pwn.at

+43 (0) 505 13 - 0  
FAX: DW 210

**GRAZ - Subsidiary**

Mühlfelderweg 30  
8055 Graz

graz@pwn.at

+43 (0) 505 13 - 80  
FAX: DW 810

**REGAU - Subsidiary**

Hessestrasse 3  
4844 Regau

regau@pwn.at

+43 (0) 505 13 - 40  
FAX: DW 410

**Sales  
Tirol / Vorarlberg**

innsbruck@pwn.at

+43 (0) 664 243 25 78  
FAX: +43 (0) 505 13-410

**24h HOTLINE  
Maintenance &  
Emergency Service**

service@pwn.at

+43 (0) 505 13 - 122